



CENTRAL PROPERTY



LOT 6064 – TOOGOOM

SOLD

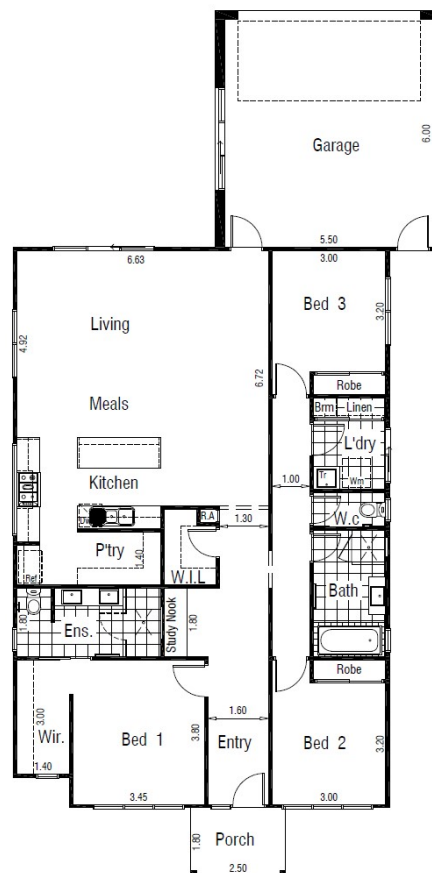
3 2 2

FRONTAGE 12.5m

LAND SIZE 313m²

PACKAGE INCLUSIONS:

- "All Design Guidelines
- Choice of Facade's
- 2590 High Ceilings
- FRONT & REAR LANDSCAPING
- FENCES
- BLINDS & LETTERBOX
- 900mm Appliances
- 20mm Stone KIT
- ENSUITE & BATHROOM
- HEATING AND COOLING
- Coloured Concrete Driveways & Path
- PICKET FENCE WITH GATE
- PLUS MUCH MORE!"



479 Eynesbury Road
Eynesbury VIC 3338
Open 7 days 11am – 5pm
(03) 9971 0414

Plans subject to change. Please review Plan of Subdivision prior to purchase.